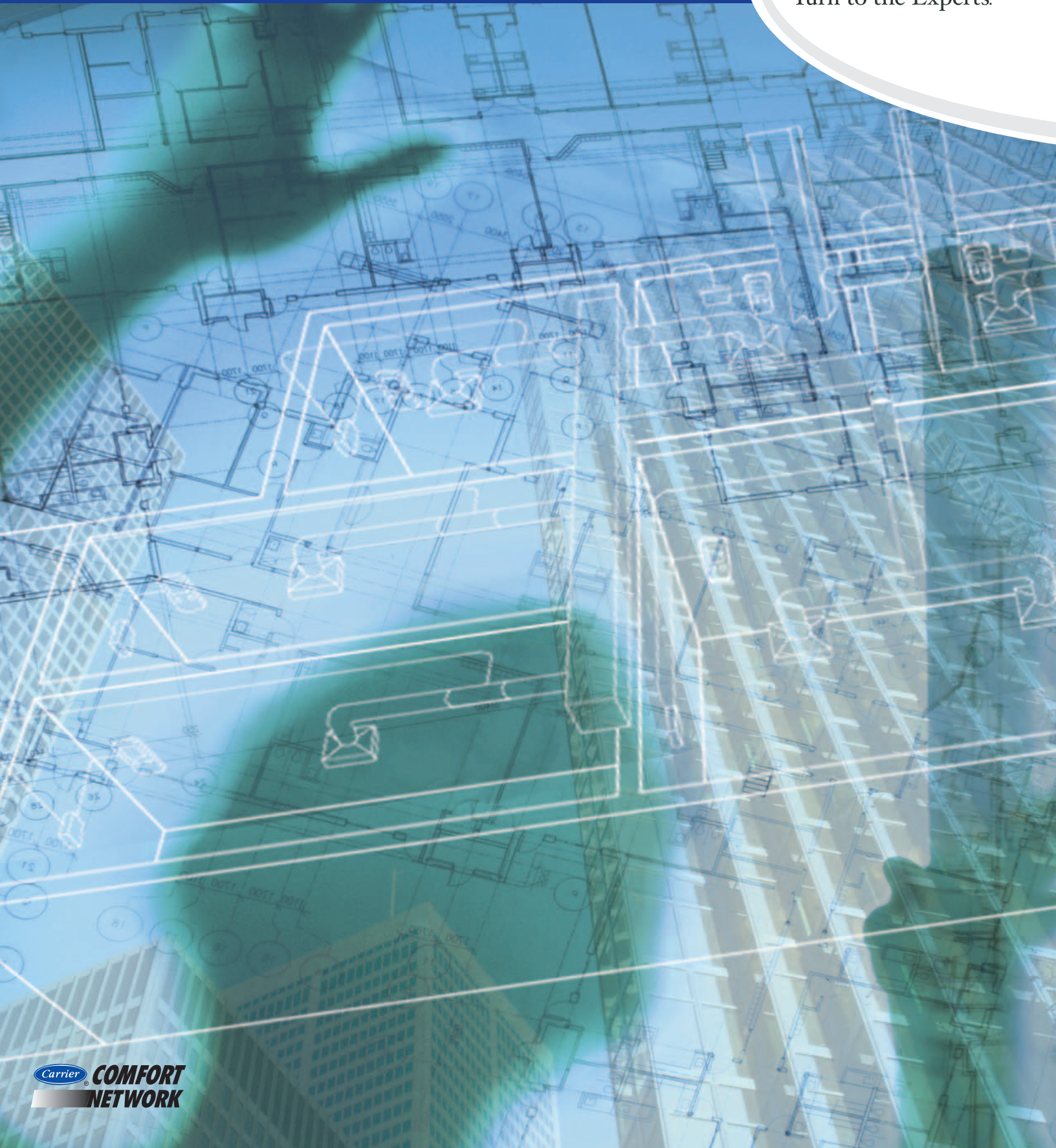


# COMMERCIAL CONTROLS DIVISION

## Building Automation Design and Installation



Turn to the Experts.™



 **COMFORT  
NETWORK**

*Take HVAC and Building Control to a New Level*

## Designing and delivering precise comfort and control

With a history of advanced controls design, manufacture, installation and maintenance spanning over four decades, Carrier continues to be the leader in providing comprehensive solutions to our customers worldwide.

We understand the positive impact that a prudent controls strategy can have on any building, regardless of its size. Which is why we design and install each building automation system to deliver the maximum in personalized comfort and overall building performance.

Our controls products also provide building managers and owners with a single web-based interface to existing (or planned) energy management and building automation systems — regardless of protocols. Immediate access to enterprise-wide information such as HVAC equipment usage data, financial data, energy prices and security data can now facilitate successful management strategies.

Each Carrier Commercial Controls Division's system design specialist has extensive "real-

world" experience in the many variables that can affect any given building's operating systems, its economic performance and its occupant's comfort.

They bring this knowledge into each new project with the specific goal of delivering the best controls and system solution possible for that particular application.



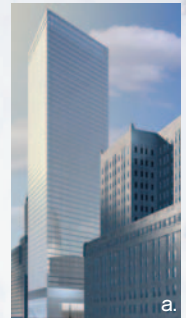
# Carrier Commercial Leaders in Building Automation

## Profiles: New Construction

### a. Commercial

#### 7 World Trade Center — New York City, NY

- 52-story office building
- Intuitive Carrier i-Vu system with CCN System Controllers, direct integration with 85 Mammoth AC units via BACNet
- Building management via web browser
- 100 Vertical Packaged Units and Condenser water system with BACNet



### b. Healthcare

#### Pascack Valley Hospital — Westwood, NJ

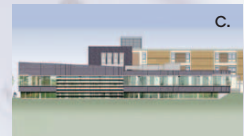
- 291-bed non-profit regional medical facility
- ComfortWORKS with 1 server and 3 clients
- CarrierOne interface for non-Carrier equipment
- Network manages 4 chillers, 22 AHUs, cooling towers, pumps, heat exchangers, compressors and exhaust fans



### c. Education

#### University Of Hartford — Integrated Science, Engineering & Technology Complex (ISET), Hartford, CT

- Departments of Biology, Chemistry, Mathematics, Computer Science, Physics, Engineering and Technology
- Complete Building Management System controls all HVAC equipment, including boilers, pumps, cooling towers, air handlers, terminals, lab exhaust and room pressurization
- 600-Ton 19XRV Centrifugal Chiller (added to existing 350-Ton 19XRV)
- 3 RACAN Air Handler Units, 35 & 45 Series VAV Terminals with 200 factory-mounted controls



### d. Entertainment

#### Westport Country Playhouse — Westport, CT

- New HVAC system allows for year-round activities
- Complete Building Management System controls all HVAC equipment including boilers and non-Carrier chiller
- ComfortVIEW graphical user interface
- Demand Controlled Ventilation (DCV) uses CO<sub>2</sub> sensors
- 39M Air Handlers, 42 Series Fan Coils, 35 VAV Terminals — all with factory-mounted controls



### e. Public/Municipal

#### Suffolk County Courthouse — Riverhead, NY

- New addition and 3-building renovation
- Facility-wide HVAC management with CCN
- 170+ VAV boxes & 16 Carrier Variable Air Volume AHUs
- Chiller plant, cooling tower, pumps and boiler controls



*From conception to completion, Carrier's controls specialists are the industry's definitive*

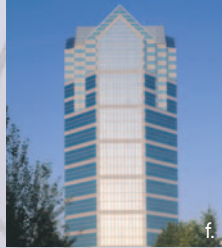
# Commercial Controls Division Automation Design and Installation

## Profiles: Retrofit and Replacement

### f. Commercial

#### One Tower Lane — Oakbrook Terrace, IL

- Dramatic 31-story octagonal tower, 773,000 sq. ft.
- Carrier Comfort Network manages all building comfort, lighting and life safety operating systems
- Variable Air Volume system
- Chiller refrigerant conversion to R-134



### g. Healthcare

#### Valley Health System — Winchester, VA

- Four separate regional & community hospitals and medical facilities totalling 647 beds
- CarrierOne, Comfort ID and Carrier 6400 controllers
- Carrier systems control 50 chilled water AHUs and 1000+ VAV boxes in 4 buildings



### h. Education

#### Agua Fria Union High School District — Avondale, AZ

- Three separate campuses comprise the district
- Fully-integrated CCN network with chiller plant optimization
- Maintains air quality and comfort while optimizing overall energy performance
- Over 300 Fan Coil Units
- 2,800-Ton capacity with Carrier's 19XR/XRV (Constant- to variable-speed chiller conversion)
- Arizona State Energy Management Award winner



### i. Entertainment

#### Loews Philadelphia Hotel — Philadelphia, PA

- 33-story 1930s Art Deco National Historic Landmark
- Carrier Comfort Network direct digital controls for 4 Carrier chillers with Product Integrated Controls (PICs)
- ChillerVisor System Manager (CSM), 4 cooling towers, 4 heat exchangers, 23 Carrier AHUs, 134 Carrier VAV boxes, & emergency stair pressurization control



### j. Public/Municipal

#### Sacred Heart Cathedral — Rochester, NY

- 1925 Cathedral controls and equipment upgrade
- Carrier Comfort Network manages new Carrier 30GX Screw Chiller, 39M AHU, 2 Carrier Centurion Rooftop units and heating plant



## Comprehensive building automation solutions...

If your requirements call for a controls system which will deliver precision, performance and reliability, look no further than Carrier. Our proactive systems

approach means that we will analyze your project from a 360° perspective before making our recommendations. This attention

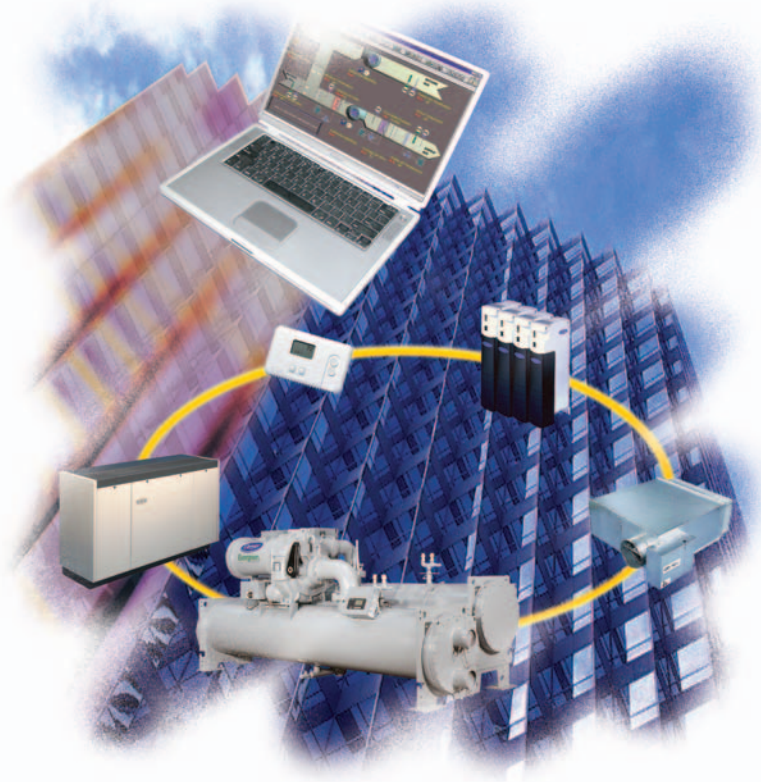
to the most minute details regarding the performance of your building *before* installation means that the system will continue to deliver operational and economic benefits *long after* its installation as well.

Of course, our expertise in controls extends well into our world-class HVAC commercial equipment. Since the early 70s, we've pioneered communicating controls systems to monitor and efficiently manage not only our equipment, but other manufacturers' as well.

So regardless of the size of your application, each Carrier Commercial Controls Division professional is ready to provide you with the highest level of building automation design and installation expertise.

Listed to the left is a very small sampling of recent projects various organizations have entrusted Carrier with to deliver successful controls solutions. For a more comprehensive look at the benefits of partnering with Carrier on your next project, contact your local Carrier Commercial Controls Division representative.





## Carrier Controls, Equipment, Installation and Service

Whether your controls solution lies within a single piece of our world-class HVAC equipment or an entire Building Management System, each professional from Carrier's Commercial Controls Division is committed to your long-term satisfaction.

We will continue to set the standard for building automation technology, design, installation and service as we strive to create the most comfortable, energy-efficient and economical building solutions.

## Turn to the Experts

Whatever your HVAC needs, from specifying and purchasing to installation and maintenance, Carrier has the solution. As the world leader in heating, ventilation and air conditioning, Carrier is committed to continually improving the quality of comfort for our customers. From concept to finished product, your local Carrier sales representatives walk with you every step of the way. Whether you have one building, multiple sites nationwide or special equipment and facility requirements, Carrier sales representatives will recommend a solution that fits your scope and your budget.



Turn to the Experts.™

[www.commercialhvacservic.carrier.com](http://www.commercialhvacservic.carrier.com)  
1-800-CARRIER

CARRIER CORPORATION ©2005

**A member of the United Technologies Corporation family. Stock symbol UTX. Catalog No. 05-04-0401-25**

Manufacturer reserves the right to discontinue, or change at any time, specifications or designs, without notice or without incurring obligations.

