

Number One
Air Conditioning
Maker



Advance Product Data

05FY, HY
07FY, HY

Division of
Carrier Corporation
Carrier Parkway • Syracuse N.Y. 13221

OPEN DRIVE COMPRESSOR UNITS (05FY, HY) AND CONDENSING UNITS (07FY, HY) FACTORY-ASSEMBLED

These new completely assembled units include the new 32 series control panel and motor. With final component alignment completed on the jobsite these units are ready to provide the highly efficient and reliable performance they are renowned for.

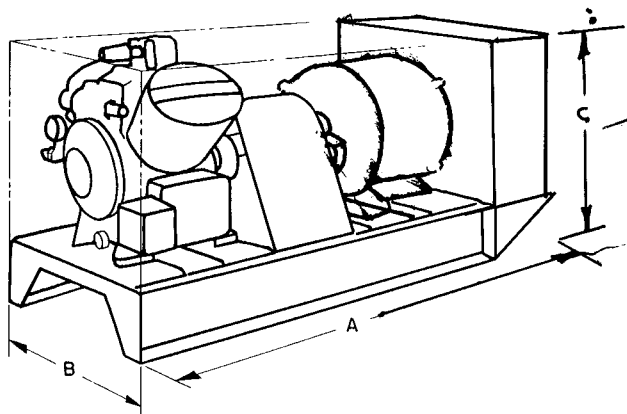
Reference your catalog #805-806 for details on the control panel and its features.

The units offered are those sizes most commonly used.

For unit selection and ratings use the existing 5F, H data currently available. Check unit selected against the unit sizes offered as complete units. A listing of the units and components is listed here and in the new price pages for these products, Catalog #500-516.

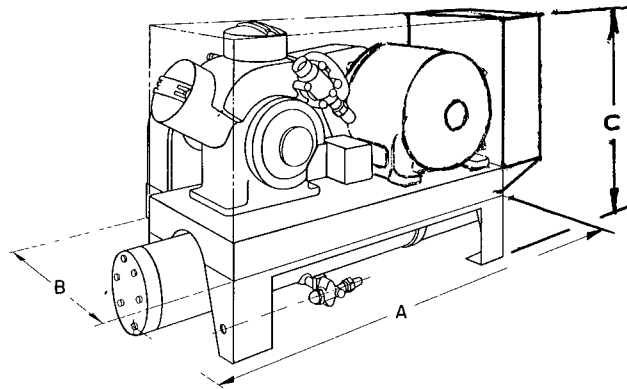
This data includes unit physical, electrical and component information.

PHYSICAL DATA



Compressor Unit,

CONDENSING UNIT



Book	2	2	4	4
Tab	1b	2a	2b	3a

7/80

PC 111

Form 05,07FY, HY-1APD New

Manufacturer reserves the right to discontinue, or change at any time, specifications or designs without notice and without incurring obligations.

UNIT ORDERING NUMBER	CONSISTING OF				OPER. WEIGHT APPROX.	DIMENSIONS		
	COMPRESSOR UNIT	MOTOR		CONTROL PANEL		LENG A.	WID. B.	HEI. C.
		HP	ELECT.					
05FY-040DC-401	5F40-148	10	208	32CE042401	750	56"	28"	27"
-601		10	460	32CE044601				
05FY-040DD-401		15	208	32CE061401				
-601		15	460	32CE045601				
05FY-060DD-401	5F60-148	15	208	32CE061401	830	61"	28"	31"
-601		15	460	32CE045601				
05FY-060DE-401		20	208	32CE071401				
-601		20	460	32CE042601				
05HY-040DF-401	5H40-558	25	208	32CE062401	1250	73"	28"	38"
-601		25	460	32CE051601				
05HY-040DG-401		30	208	32CE072401				
-601		30	460	32CE052601				
05HY-046DH-401	5H46-144	40	208	32CE031401	1350	73"	28"	38"
-601		40	460	32CE071601				
05HY-046DJ-401		50	208	32DE081401				
-601		50	460	32CE053601				
05HY-060DJ-401	5H60-A114	50	208	32DE081401	1700	72"	40"	40"
-601		50	460	32CE053601				
05HY-060DK-401		60	208	32DE082401				
-601		60	460	32CE031601				
05HY-066DK-401	5H66-344	60	208	32DE082401	1880	72"	40"	40"
-601		60	460	32CE031601				
05HY-066DL-601		75	460	32CE032601				
05HY-066DM-601		100	460	32DE081601				
05HY-080DL-601	5H80-558	75	460	32CE032601	2510	92"	33"	44"
05HY-080DM-601	5H80-768	100	460	32DE081601			40"	
05HY-086DM-601	5H86-184	100	460	32DE081601	2570	92"	40"	44"
05HY-086DN-601		125	460	32DE091601				
05HY-120DM-601	5H120-A114	100	460	32DE081601	3085	93"	40"	46"
05HY-120DN-601		125	460	32DE091601				
05HY-120DP-601		150	460	32DE092601				
05HY-126DN-601	5H126-284	125	460	32DE091601	3325	93"	40"	46"
05HY-126DP-601		150	460	32DE092601				

ORDERING NUMBER	CONSISTING OF			OPER. WEIGHT APPROX.	DIMENSIONS		
	COMPRESSOR UNIT	MOTOR HP ELECT.	CONTROL PANEL		LENG. A.	WID. B.	HEI. C.
05FY-020BA-401 -601	5F20-258	5 208	32CE041401	675	46"	28"	32"
05FY-020BB-401 -601		5 460	32CE041601				
05FY-020BB-401 -601		7.5 208	32CE043401				
05FY-020BB-401 -601		7.5 460	32CE043601				
05FY-030BB-401 -601	5F30-268	7.5 208	32CE043401	700	47"	28"	32"
05FY-030BB-401 -601		7.5 460	32CE043601				
05FY-030BC-401 -601		10 208	32CE042401				
05FY-030BC-401 -601		10 460	32CE044601				
05FY-040BC-401 -601	5F40-268	10 208	32CE042401	725	56"	30"	27"
05FY-040BC-401 -601		10 460	32CE044601				
05FY-040BD-401 -601		15 208	32CE061401				
05FY-040BD-401 -601		15 460	32CE045601	800			
05FY-060BD-401 -601	5F60-268	15 208	32CE061401	880	60"	30"	31"
05FY-060BD-401 -601		15 460	32CE045601				
05FY-060BE-401 -601		20 208	32CE071401				
05FY-060BE-401 -601		20 460	32CE042601				
05HY-040BF-401 -601	5H40-608	25 208	32CE062401	1330	66"	32"	37"
05HY-040BF-401 -601		25 460	32CE051601				
05HY-040BG-401 -601		30 208	32CE072401				
05HY-040BG-401 -601		30 460	32CE052601				
05HY-060BH-401 -601	5H60-A144	40 208	32CE031401	1800	68"	34"	35"
05HY-060BH-401 -601		40 460	32CE071601		68"	34"	
05HY-060BJ-401 -601		50 208	32DE081401		70"	40"	
05HY-060BJ-401 -601		50 460	32CE053601	68"	34"		
05HY-080BK-401 -601	5H80-B659	60 208	32DE082401	2600	76"	45"	43"
05HY-080BK-401 -601		60 460	32CE031601		74"	45"	43"
05HY-080BL-601		75 460	32CE032601		74"	45"	43"
05HY-120BL-601		75 460	32CE032611	3300	76"	48"	44"
05HY-120BM-601	5H120-A144	100 460	32DE081601		78"	48"	44"

UNIT ORDERING NUMBER	CONSISTING OF						OPER. WEIGHT APPRO.	DIMENSIONS		
	COMPRESSOR	CONDENS.	MOTOR		CONTROL PANEL	LENG. A.		WID. B.	HEI. C.	
			HP	ELECT.						
07FY-020BA-401A	5F20-268	5F20-984	5	208	32CE041401	460	47"	28"	32"	
07FY-020BB-401A			5	460	32CE041601	520				
07FY-020BB-401A			7.5	208	32CE043401	590				
07FY-020BB-401A			7.5	460	32CE043601	605				
07FY-030BB-401B			7.5	208	32CE043401	1060				
07FY-030BB-401B			7.5	460	32CE043601	1110				
07FY-030BC-401B			10	208	32CE042401	1335				
07FY-030BC-401B			10	460	32CE044601	1360				
07FY-040BC-401C			10	208	32CE042401	1835				
07FY-040BC-401C			10	460	32CE044601	1870				
07FY-040BD-401C			15	208	32CE061401	2180				
07FY-040BD-401C			15	460	32CE045601	2230				
07FY-060BD-401D			15	208	32CE061401	2425				
07FY-060BD-401D			15	460	32CE051601	2610				
07FY-060BE-401D			20	208	32CE072401	2710				
07FY-060BE-401D			20	460	32CE052601	3440				
07HY-040BF-401E			25	208	32CE031401	3605				
07HY-040BF-401E			25	460	32CE071601	3690				
07HY-040BG-401E			30	208	32DE081601	3850				
07HY-040BG-401E			30	460	32CE031401	3970				
07HY-040BH-401F			40	208	32CE071601	4280				
07HY-040BH-401F			40	460	32DE081601	4560				
07HY-040BJ-401F			50	208	32CE081601					
07HY-040BJ-401F			50	460	32CE053601					
07HY-060BJ-401F			50	208	32DE081601					
07HY-060BJ-401F			50	460	32CE032601					
07HY-060BJ-401G			50	208	32DE081601					
07HY-060BJ-401G			50	460	32CE053601					
07HY-060BK-401G			60	208	32DE082401					
07HY-060BK-401G			60	460	32CE031601					
07HY-080BL-601H			75	460	32CE032601					
07HY-080BM-601H			100	460	32DE081601					
07HY-080BL-601J			75	460	32CE032601					
07HY-080BM-601J			100	460	32DE081601					
07HY-080BM-601K			100	460	32DE081601					
07HY-120BL-601J			75	460	32CE032601					
07HY-120BM-601K			100	460	32DE081601					

PHYSICAL DATA - DIRECT DRIVE CONDENSING UNITS

UNIT ORDERING NUMBER	CONSISTING OF						OPER. WEIGHT APPRO.	DIMENSIONS		
	COMPRESSOR	CONDENSER	MOTOR		CONTROL PANEL	LENG. A.		WID. B.	HEI. C.	
			HP	ELECT.						
07FY-040DC-401C -601C	5F40-148	5F40-429	10 10 15 15	208 460 208 460	32CE042401 32CE044601 32CE061401 32CE045601	63"	28"	35"		
07FY-040DD-401C -601C	5F60-148	5F60-429	15 15	208 460	32CE061401 32CE045601	74"	28"	39"		
07FY-060DE-401E -601E	5F60-178	09RH-027	20 20	208 460	32CE071401 32CE042601	77"				
07HY-040DF-401E -601E	5H40-558	09RH-027	25 25	208 460	32CE062401 32CE051601	77"	28"	45"		
07HY-040DG-401F -601F	5H40-558	09RH-043	30 30	208 460	32CE072401 32CE052601	79"	28"	47"		
07HY-046DH-401F -601F	5H46-144	09RH-043	40 40	208 460	32CE031401 32CE071601	79"	28"	47"		
07HY-046DJ-401G -601G	5H60-A114	09RH-054	50 50	208 460	32DE081401 32CE053601	95"	40" 28"	48"		
07HY-060DK-401H -601H	5H66-344	09RH-070	60 60	208 460	32DE082401 32CE031601	95" 100"	40" 32"	48" 51"		
07HY-080DK-401H -601H	5H80-558	09RH-084	75 60	460 208	32CE032601 32DE082401	95"	40"			
07HY-080DL-601H -601H	5H80-768	09RH-084	75 100 100	460 460 460	32CE032601 32CE081601 32CE081601	100"	33" 33" 40"	56"		
07HY-086DL-601J -601K	5H86-144	09RH-084 09RH-097	75 75	460 460	32CE032601 32CE032601	123"	31"	54"		
07HY-120DM-601K -601L	5H120-A114	09RH-097	100 125	460 460	32DE081601 32DE091601	123" 101"	40"	56" 60"		
07HY-120DP-601L -601K	5H126-284	09RH-127 09RH-097	150 125 125	460 460 460	32DE092601 32DE091601 32DE091601	123" 101"	40"	56" 60"		
07HY-126DN-601K -601L		09RH-127	150	460	32DE092601	123"	40"	56"		
07HY-126DP-601L		09RH-127	150	460	32DE092601	101"	40"	60"		

ELECTRICAL DATA TABLE

Reference Physical Data Tables for unit motor horsepower. The following table is categorized by motor horsepower for easy use.

MOTOR			CONTROL CENTER MODEL	LRA	FLA	MTA	MIN. CKT. AMPS	MAX. FUSE SIZE
HP	FRAME SIZE	VOLT.						
5	184	208	32CE041401	106	17.5	22	22	35
		460	32CE041601	46	7.6	9.5	10	15
7-1/2	213	208	32CE042601	146	25	34.6	32	50
		460	32CE043601	63	11	14.6	14	25
10	215	208	32CE042401	186	32	42.5	40	70
		460	32CE044601	81	14	18.7	18	30
15	254	208	32CE061401	267	48	63.4	60	100
		460	32CE045601	116	21	26.0	27	45
20	256	208	32CE071401	334	62	80.0	78	125
		460	32CE042601	145	27	34.6	34	60
25	284	208	32CE062401	420	78	100	98	175
		460	32CE051601	182	34	45.7	43	70
30	286	208	32CE072401	500	92	116.2	115	200
		460	32CE052601	217	40	53.3	50	90
40	324	208	32CE031401	667	120	160	150	250
		460	32CE071601	290	52	67.6	65	110
50	326	208	32DE081401	834	150	202	188	300
		460	32CE053601	362	65	85	82	125
60	364	208	32DE082401	1000	177	246	222	350
		460	32CE031601	435	77	101	97	150
75	365	460	32CE032601	592	96	126.8	120	200
100	404	460	32DE081601	725	124	160	155	250
125	405	460	32DE091601	907	156	202	195	350
150	444	460	32DE092601	1085	180	246	225	400

Legend: LRA - Lock Rotor Amps
 FLA - Full Load Amps
 MTA - Must Trip Amps

Service factor for motors is 115%.