

CARLYLE SCROLL COMPRESSOR SPECIFICATIONS



MODEL SCD400HC

208/230 VOLTS, SINGLE PHASE, 60HZ, R-22

NOMINAL PERFORMANCE AT ASRE/T 230 VOLTS

Capacity (Btu/hr)	40,100
EER (Btu/W-hr).....	11.2
Power (W).....	3610
Current (A).....	16.0

RATING CONDITIONS AT ASRE/T

Condensing Temp. (Deg. F)	130
Evaporating Temp. (Deg. F)	45
Return Gas Temp. (Deg. F)	95
Liquid Temp. (Deg. F).....	115
Ambient Temp. (Deg. F)	95

MOTOR

Operating Voltage Range.....	198-253
Locked Rotor Amps.....	115.0
Maximum Continuous Current.....	28.6
Rated Load Amps.....	18.3

ELECTRICAL COMPONENTS

Motor Protector Type.....	Internal
Run Capacitor Type.....	40/440

OIL

Oil Type.....	Zerol 150T w/ 3% SYN-O-AD
Initial Charge (oz.)	36
Re-Charge (oz.)	34

COMPRESSOR

Maximum Discharge Temp. (Deg. F)	280
Displacement (cu. in / rev).....	3.32
Weight (lbs.,Wet)	65.0
UL/CSA File #	SA11565

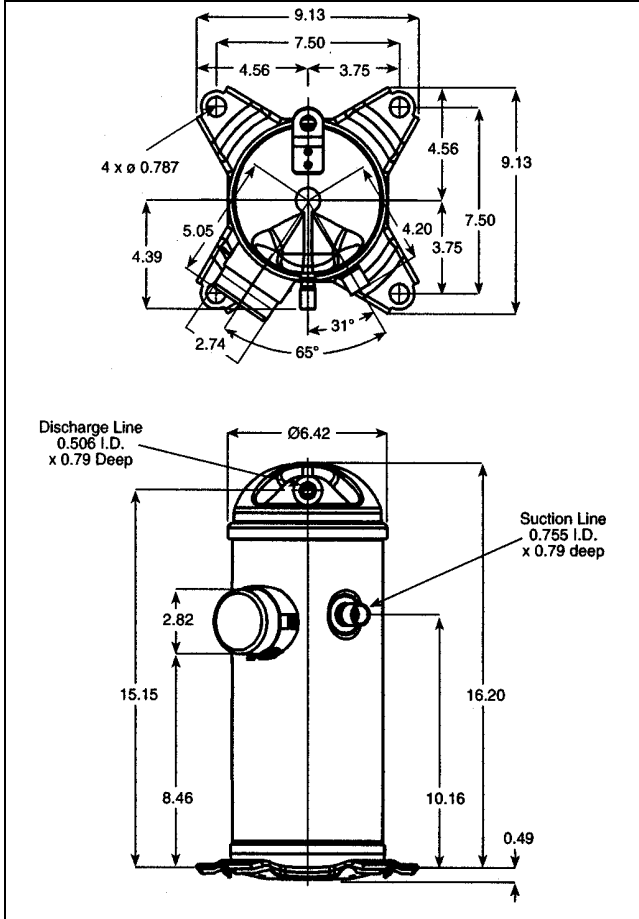
Specifications are subject to change without notice
 Nominal performance value +/- 5%
 Ratings generated with air over compressor

Carlyle Compressor Company

In the U.S.A. and Puerto Rico: 1-800-GO-CARLYLE (1-800-462-2759)
 Canada: 1-800-258-1123
 Mexico: 001-800-462-2759
 Fax: 315-432-3274

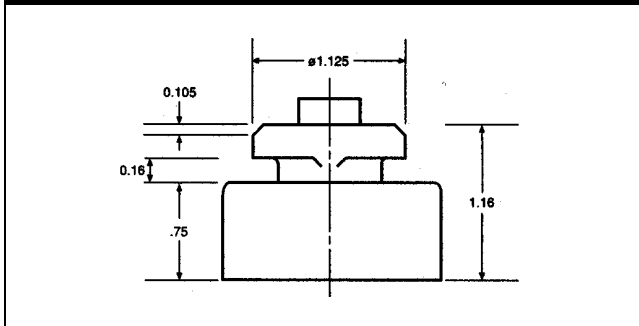
40100 Btu/hr

SC MODEL OUTLINE DIMENSIONS

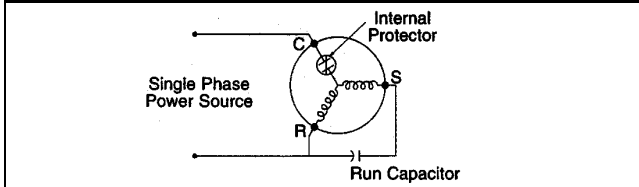


Dimensions given in Inches

ISOLATOR MOUNTING DIAGRAM



ELECTRICAL WIRING DIAGRAM



MODEL: SCD400HC **SUBCOOLING:** 15' F
VOLTAGE: 208/230-1-60 **SUPERHEAT:** 20' F
REFRIGERANT: R-22 **RATING DATE:** Feb-98



Saturated Condensing Temperature (Degrees F)		Saturated Evaporating Temperature (Degrees F)															
		-20	-15	-10	-5	0	5	10	15	20	25	30	35	40	45	50	55
80	Capacity (Btu/hr)	8100	11000	13800	16500	19200	21900	24800	27700	30900	34300	38000	42000	46400	51200	56500	62400
	Power (Watts)	2030	2030	2040	2040	2040	2030	2020	2010	1990	1960	1930	1880	1830	1770	1700	1610
	Current (Amps)	8.3	8.9	9.3	9.6	9.8	9.8	9.9	9.8	9.8	9.8	9.9	10.1	10.3	10.8	11.4	12.3
	Flow Rate (lbs/hr)	288	267	258	259	269	288	314	347	385	429	477	527	580	635	690	745
	EER (Btu/Watt-hr)	4.0	5.4	6.8	8.1	9.4	10.8	12.3	13.8	15.5	17.5	19.7	22.3	25.4	28.9	33.2	38.8
90	Capacity (Btu/hr)		10000	12800	15500	18200	20900	23700	26600	29600	32900	36400	40200	44400	49000	54100	59700
	Power (Watts)		2290	2280	2280	2280	2270	2270	2260	2250	2240	2220	2190	2160	2120	2080	2030
	Current (Amps)		9.9	10.4	10.7	10.9	10.9	10.9	10.8	10.7	10.6	10.5	10.5	10.6	10.8	11.2	11.8
	Flow Rate (lbs/hr)		263	254	255	265	283	309	341	379	421	468	517	569	621	675	727
	EER (Btu/Watt-hr)		4.4	5.6	6.8	8.0	9.2	10.4	11.8	13.2	14.7	16.4	18.4	20.6	23.1	26.0	29.4
100	Capacity (Btu/hr)			11600	14400	17000	19700	22400	25200	28200	31400	34700	38400	42400	46800	51700	57000
	Power (Watts)			2590	2580	2560	2550	2540	2540	2530	2520	2510	2490	2480	2460	2430	2400
	Current (Amps)			11.2	11.7	11.9	12.0	12.0	12.0	11.8	11.7	11.5	11.4	11.4	11.5	11.7	12.0
	Flow Rate (lbs/hr)			248	250	260	279	304	336	374	416	461	510	561	612	664	715
	EER (Btu/Watt-hr)			4.5	5.6	6.6	7.7	8.8	9.9	11.1	12.5	13.8	15.4	17.1	19.0	21.3	23.8
110	Capacity (Btu/hr)				15600	18300	21000	23800	26600	29700	33000	36500	40400	44600	49200	54300	
	Power (Watts)				2930	2900	2880	2860	2850	2840	2830	2820	2810	2790	2780	2770	
	Current (Amps)				12.9	13.1	13.2	13.2	13.1	13.0	12.8	12.7	12.6	12.6	12.7	12.9	
	Flow Rate (lbs/hr)				253	272	299	331	368	410	456	504	554	605	656	706	
	EER (Btu/Watt-hr)				5.3	6.3	7.3	8.3	9.3	10.5	11.7	12.9	14.4	16.0	17.7	19.6	
120	Capacity (Btu/hr)							19300	22100	24900	27900	31000	34400	38100	42200	46600	51500
	Power (Watts)							3300	3260	3240	3210	3200	3180	3170	3160	3150	3150
	Current (Amps)							14.4	14.5	14.5	14.5	14.4	14.3	14.2	14.1	14.2	14.3
	Flow Rate (lbs/hr)							290	323	361	403	449	497	547	598	648	697
	EER (Btu/Watt-hr)							5.8	6.8	7.7	8.7	9.7	10.8	12.0	13.4	14.8	16.3
130	Capacity (Btu/hr)									22900	25800	28900	32200	35800	39700	43900	48600
	Power (Watts)									3720	3680	3650	3620	3600	3580	3570	3560
	Current (Amps)									15.9	16.0	16.1	16.0	16.0	16.0	16.1	16.2
	Flow Rate (lbs/hr)									349	392	439	488	538	589	639	688
	EER (Btu/Watt-hr)									6.2	7.0	7.9	8.9	9.9	11.1	12.3	13.7
140	Capacity (Btu/hr)											26500	29700	33200	37000	41100	45600
	Power (Watts)											4200	4160	4120	4090	4070	4050
	Current (Amps)											17.8	18.0	18.1	18.2	18.4	18.6
	Flow Rate (lbs/hr)											423	473	524	576	627	676
	EER (Btu/Watt-hr)											6.3	7.1	8.1	9.0	10.1	11.3
150	Capacity (Btu/hr)													30400	34000	38000	42300
	Power (Watts)													4760	4700	4660	4630
	Current (Amps)													20.3	20.6	20.9	21.3
	Flow Rate (lbs/hr)													505	557	609	660
	EER (Btu/Watt-hr)													6.4	7.2	8.2	9.1

* Specifications are subject to change without notice Data Based on 230 volts