

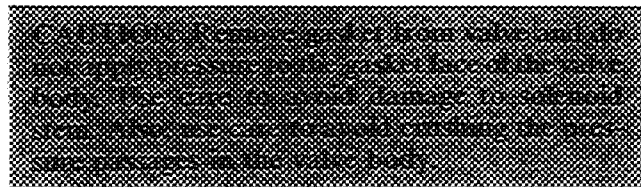
Accessory Capacity Control Package Electric Control Valve

INTRODUCTION

These instructions apply to field conversion of Model 06D,E compressors from pressure to electric unloading.

As received, the valve is ready for use on compressors with bypass-type unloading system (all 06D models and older 06E models). A simple modification converts the valve for use on current 06E models (suction cutoff unloading system).

The solenoid included in the package is for use on 115-volt control circuit; for 230-volt control circuit, a separate coil must be ordered. The 115-volt coil can be discarded.



Pull the bypass piston away from the valve body exposing the spring guide as shown in Fig. 1B. With an open-end wrench, unscrew the spring guide from the valve body, removing the bypass piston assembly. The valve is now ready for installation. The bypass piston assembly can be discarded.

ACCESSORY PACKAGE Package Contents

| ITEM NO. | PACKAGE NUMBER | | 06EA900342 (Electric) |
|----------|------------------------------|-----|--------------------------|
| | Description | Req | Part Number |
| 1 | Valve Assembly (less coil) | 1 | 06EA400583 |
| 2 | Cap Screw; ¼—28 x ¾ in lg | 3 | AB44AA168 |
| 3 | Cap Screw Gasket; ¼ in | 3 | AU52YA171 |
| 4 | Coil Assembly* (120-1-50/60) | 1 | 06EA401313 |
| 5 | Strainer | 1 | 6D75-601 |
| 6 | Installation Instructions | 1 | 06D,E-4SI |

*For 208/240-1-50/60 coil (Part No 06EA401303), order accessory package no 06EA900352 (coil only) separately and discard the 120-volt coil

RECEIVE PACKAGE

Examine Package Contents — Check each item for shipping damage. If any damage is found, file a claim immediately with the shipping agent. If any item is missing, notify your Carrier distributor.

INSTALLATION

Prepare Valve

FOR BYPASS UNLOADING

Valve is used as received (Fig. 1A). Check condition of bypass piston. *Ring groove must be perfectly clean and free from nicks.*

FOR SUCTION CUTOFF UNLOADING

The bypass piston must be removed. With the coil off, hold the valve securely in a vise or by other suitable means.

Complete Valve Replacement

1. Install discharge and suction pressure service gages.
2. Start compressor and allow it to run until warm. Then frontseat suction shutoff valve and let compressor pump down to approximately 2 psig.
3. Stop compressor and quickly frontseat discharge shutoff valve. Bleed off remaining refrigerant from discharge side of compressor.
4. Remove 3 cap screws and remove the pressure operated control valve.
5. If the solenoid coil is on the replacement control valve, remove it for easier handling.
6. Control valve gasket must be positioned correctly on flange. *Tab must be outward as shown in Fig. 2.*

Align the 2 gasket holes opposite the tab with 2 holes in flange. The elongated gasket hole at the tab should now be over the third flange hole, which is offset to ensure proper orientation of valve on cylinder head. *Proper gasket position ensures unobstructed pressure passages between capacity control valve and head.*

7. *Bypass unloading only. For suction cutoff unloading, omit this step and continue with Step 8. Steps 8—12 are common.*

Wipe the head cavity walls clean and apply thin film of compressor oil. Carefully compress bypass piston ring (Fig. 1) and insert piston into head cavity. *Be sure gasket does not shift.*

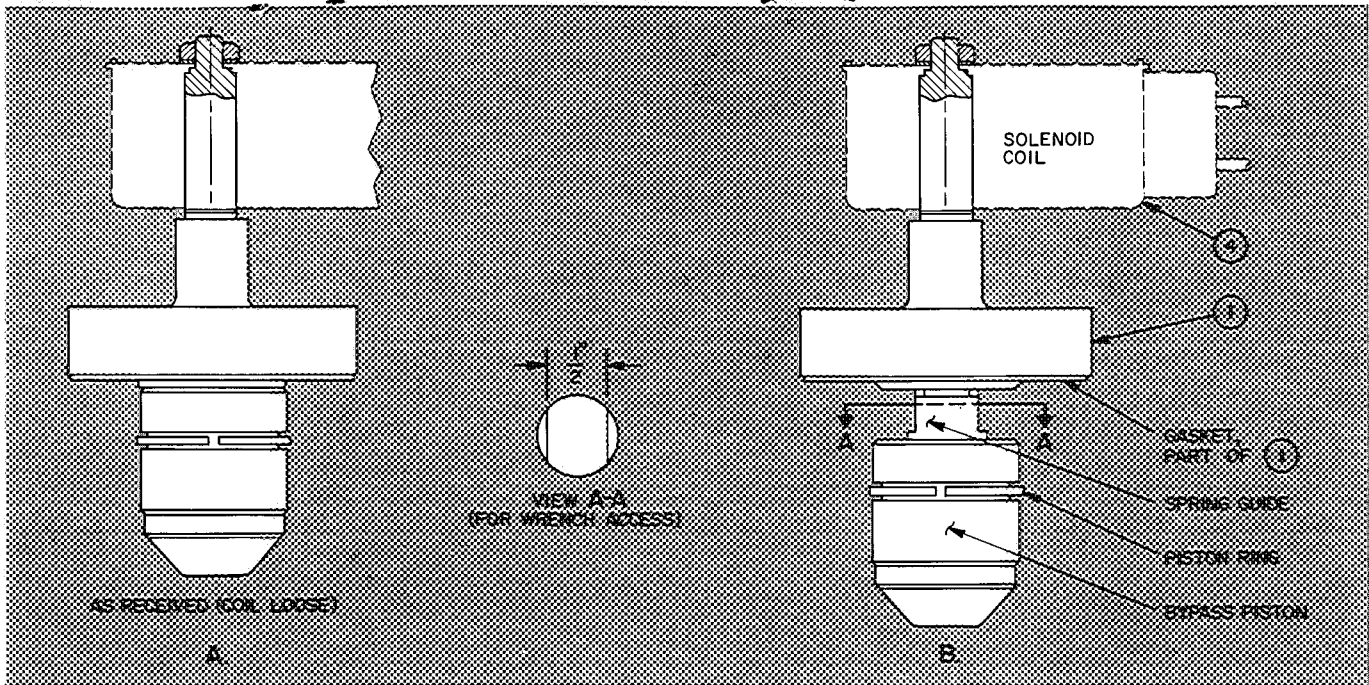


Fig. 1 — Capacity Control Valve — Electric

8. Using the 3 cap screws and washers supplied, secure control valve body to head. Torque cap screws to 14-16 lb-ft.
9. Place solenoid coil over valve stem and secure with nut.
10. Make necessary wiring connections. When solenoid coil is energized, cylinder bank unloads; when coil is de-energized, cylinder bank loads.
11. Check solenoid valve for proper operation. An audible click can be heard when valve actuates.
12. Open compressor service valves. Start compressor and allow it to warm up. Operate solenoid valve several times to be sure it is performing properly. Suction pressure should rise and discharge pressure should fall when valve is energized.

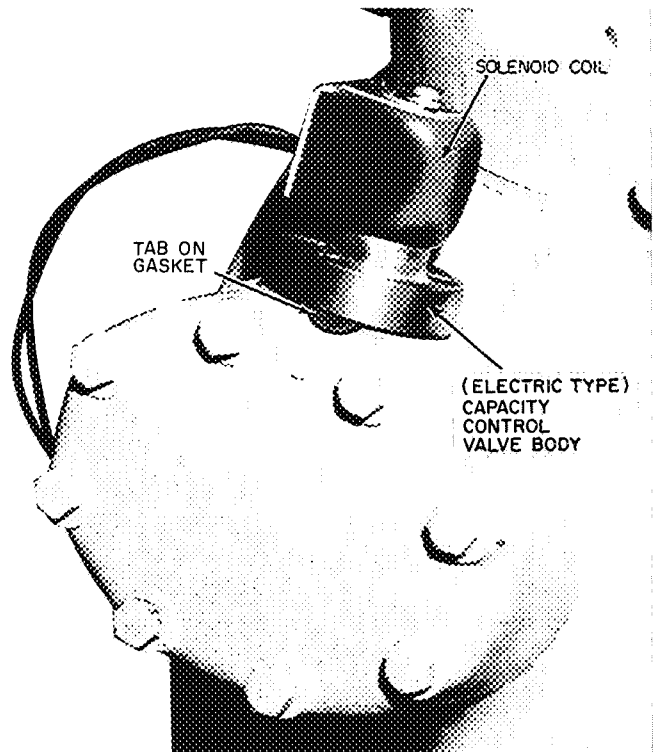


Fig. 2 — Installed Capacity Control Valve

Manufacturer reserves the right to discontinue, or change at any time, specifications or designs without notice and without incurring obligations.

| | | |
|------|----|----|
| Book | 2 | 4 |
| Tab | 2a | 3a |